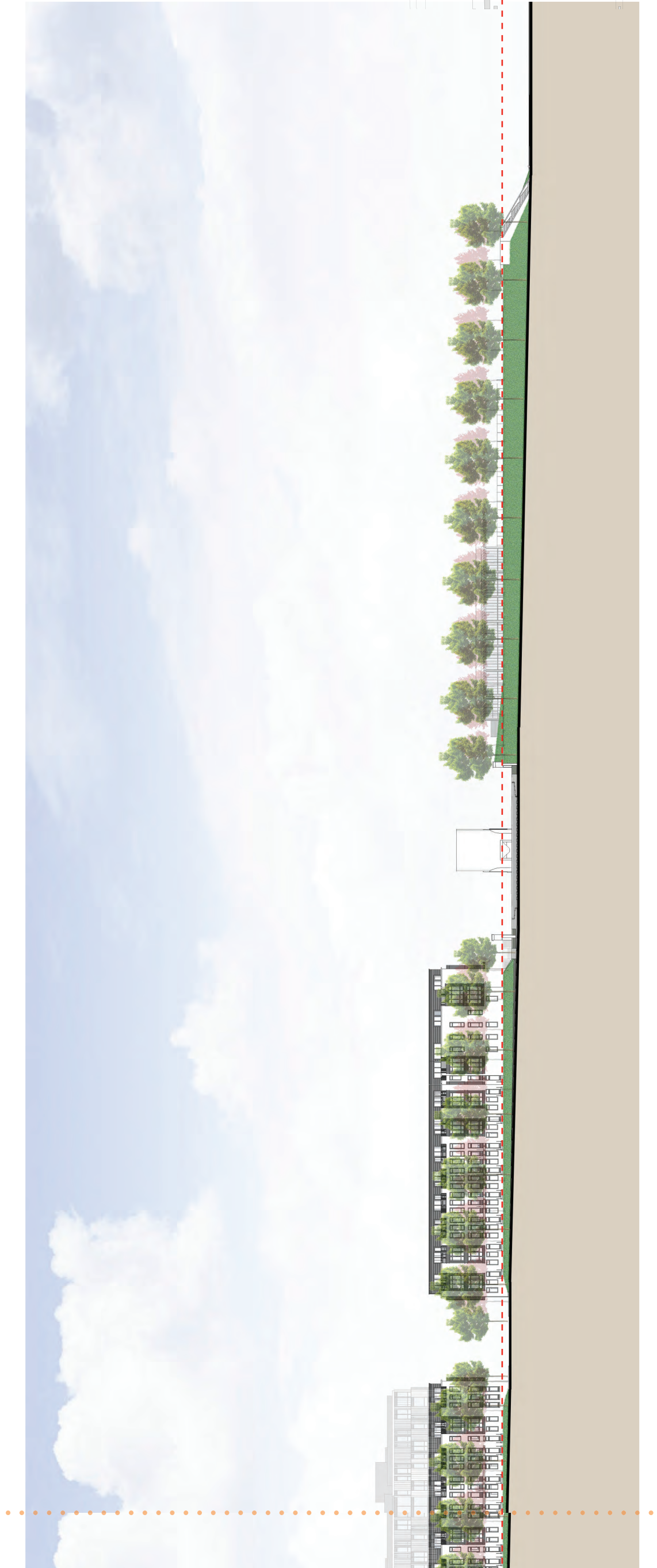


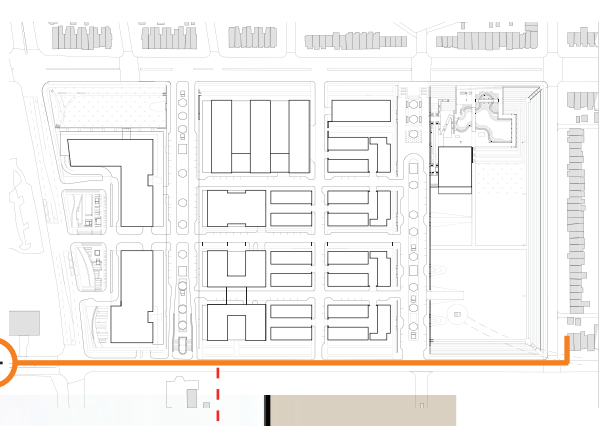
1 FIRST STREET FACING EAST



ELEV.
 NORTH BLOCK MP @ 177.3'
 GROCERY/MULTIFAMILY
 BLOCK MP @ 168'
 ROW HOUSES
 BLOCK MP @ 168'



1



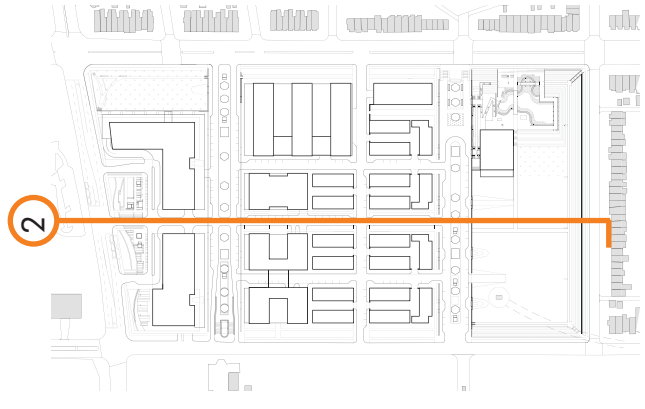
KEY PLAN

SCALE



2 HALF STREET FACING WEST





KEY PLAN

SCALE



3 HALF STREET FACING EAST



- NORTH BLOCK MP @ 177.3'
- GROCERY/MULTIFAMILY BLOCK MP @ 168'
- ROW HOUSES BLOCK MP @ 168'
- COMMUNITY CENTER MP @ 165'